



# Discovery Club After School

## 2022-2023 Calendar

### SEPTEMBER 2022

6	Tue	First Day of Discovery Club
7	Wed	Early Release Newton*
21	Wed	Early Release Needham
26-27	Mon-Tue	<b>Closed Rosh Hashanah</b>
29	Thur	Early Release Newton

### OCTOBER 2022

4-5	Tue-Wed	<b>Closed Yom Kippur</b>
10	Mon	<b>Closed Indigenous Peoples' Day</b>
12	Wed	Early Release Needham
26	Wed	Early Release Needham

### NOVEMBER 2022

8	Tue	Early Release Newton
9	Wed	Early Release Needham
11	Fri	<b>Closed Veterans Day / JCC Educators Professional Development Day</b>
23-25	Wed-Fri	<b>Closed Thanksgiving Break</b>

### DECEMBER 2022

7	Wed	Early Release Newton
8	Thur	Early Release Needham
21	Wed	Early Release Needham
23-Jan. 2	Fri-Mon	<b>Closed Winter Break</b>

### JANUARY 2023

2	Tue	Discovery Club Resumes
11	Wed	Early Release Needham
16	Mon	<b>Closed Martin Luther King Jr. Day</b>
25	Wed	Early Release Needham

### FEBRUARY 2023

2	Thur	Early Release Newton
8	Wed	Early Release Needham
20-24	Mon-Fri	<b>Closed February Break</b>

### MARCH 2023

8	Wed	Early Release Needham
10	Fri	<b>Closed JCC Educator Professional Development Day</b>
22	Wed	Early Release Needham
23	Thur	Early Release Newton

### APRIL 2023

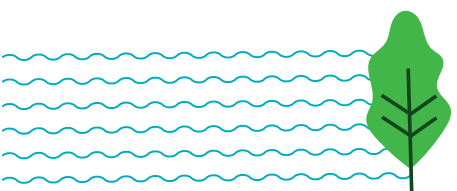
5-6	Wed-Thu	<b>Closed Passover</b>
7	Fri	<b>Closed Good Friday</b>
17-21	Mon-Fri	<b>Closed April Break</b>
26	Wed	Early Release Needham

### MAY 2023

3	Wed	Early Release Needham
11	Thur	Early Release Newton
29	Mon	<b>Closed Memorial Day</b>
31	Wed	Early Release Needham

### JUNE 2023

16	Fri	Last Day of Discovery Club
----	-----	----------------------------



[bostonjcc.org/discoveryclub](http://bostonjcc.org/discoveryclub)

Discovery Club is open Monday –Friday 3-6 PM, September 6, 2022 - June 16, 2023, and from 12:30-6pm on early release days.  
 \*Discovery Club operates on all Newton Public School's Early release Wednesdays beginning on September 7  
 This calendar may be updated during the year due to school, local, or JCC changes. Families will be notified as soon as possible of any adjustments.

**Discovery Club** (at the Leventhal-Sidman JCC)  
 333 Nahanton St • Newton, MA 02459 • 617-558-6483 • [discoveryclub@jccgb.org](mailto:discoveryclub@jccgb.org)