



# Discovery Club After School

## 2024-2025 Calendar

### SEPTEMBER 2024

|    |     |                             |
|----|-----|-----------------------------|
| 3  | Tue | First Day of Discovery Club |
| 4  | Wed | Early Release Newton*       |
| 18 | Wed | Early Release Needham       |

### OCTOBER 2024

|     |         |  |
|-----|---------|--|
| 2   | Wed     | <b>Closed Erev Rosh Hashanah</b>           |
| 3-4 | Thu-Fri | <b>Closed Rosh Hashanah days 1 &amp; 2</b> |
| 9   | Wed     | Early Release Needham                      |
| 11  | Fri     | <b>Closed Erev Yom Kippur (Kol Nidre)</b>  |
| 14  | Mon     | <b>Closed Indigenous People's Day</b>      |
| 23  | Wed     | Early Release Needham                      |

### NOVEMBER 2024

|       |         |   |
|-------|---------|---|
| 5     | Tue     | <b>Closed Election Day</b>  |
| 11    | Mon     | <b>Closed Veterans Day / JCC Educators Professional Development Day</b> |
| 20    | Wed     | Early Release Needham   |
| 27-29 | Wed-Fri | <b>Closed Thanksgiving Break</b>  |

### DECEMBER 2024

|           |         |                            |
|-----------|---------|----------------------------|
| 4         | Wed     | Early Release Needham      |
| 18        | Wed     | Early Release Needham      |
| 32-Jan. 1 | Mon-Wed | <b>Closed Winter Break</b> |

### JANUARY 2025

|    |     |  |
|----|-----|--|
| 2  | Thu | Discovery Club Resumes                   |
| 8  | Wed | Early Release Needham                    |
| 20 | Mon | <b>Closed Martin Luther King Jr. Day</b> |
| 22 | Wed | Early Release Needham                    |
| 29 | Wed | <b>Closed Lunar New Year</b>             |

### FEBRUARY 2025

|       |         |                              |
|-------|---------|------------------------------|
| 5     | Wed     | Early Release Needham        |
| 17-21 | Mon-Fri | <b>Closed February Break</b> |

### MARCH 2025

|    |     |   |
|----|-----|---|
| 5  | Wed | Early Release Needham                                   |
| 7  | Fri | <b>Closed JCC Educator Professional Development Day</b> |
| 19 | Wed | Early Release Needham                                   |

### APRIL 2025

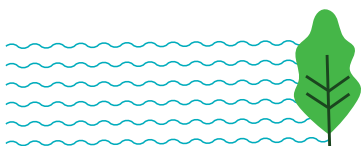
|       |         |                           |
|-------|---------|---------------------------|
| 2     | Wed     | Early Release Needham     |
| 16    | Wed     | Early Release Needham     |
| 18    | Fri     | <b>Closed Good Friday</b> |
| 21-25 | Mon-Fri | <b>Closed April Break</b> |

### MAY 2025

|    |     |                            |
|----|-----|----------------------------|
| 7  | Wed | Early Release Needham      |
| 26 | Mon | <b>Closed Memorial Day</b> |
| 28 | Wed | Early Release Needham      |

### JUNE 2025

|    |     |                                     |
|----|-----|-------------------------------------|
| 13 | Fri | <b>Last Day of Discovery Club**</b> |
|----|-----|-------------------------------------|



[bostonjcc.org/discoveryclub](http://bostonjcc.org/discoveryclub)

Discovery Club is open Monday –Friday 3-6 PM, September 3, 2024- June 13, 2025, and from 12:30-6pm on early release days.

\*Discovery Club operates on all Newton Public School's Early release Wednesdays beginning on September 4

\*\* While not the end of the school year for some districts we serve, June 13th marks the conclusion of Discovery Club's session to make room for Camp Kaleidoscope as they kick off their summer activities.

Please note that Newton Public Schools may add additional early release days to their schedule. We will operate on those early release days. This calendar may be updated during the year due to school, local or JCC changes. Families will be notified as soon as possible of any adjustments.

**Discovery Club** (at the Leventhal-Sidman JCC) • 333 Nahanton St • Newton, MA 02459 • 617-558-6483 • [discoveryclub@jccgb.org](mailto:discoveryclub@jccgb.org)

